

GLASS BALUSTRADE & POOL FENCING



FRAMELESS POOL BALUSTRADING

- Standard and custom 12mm toughened glass
- Cantilevered rebate in concrete or sub floor channel
- High quality, top end, soft close hydraulic self closing pool gate hardware as standard

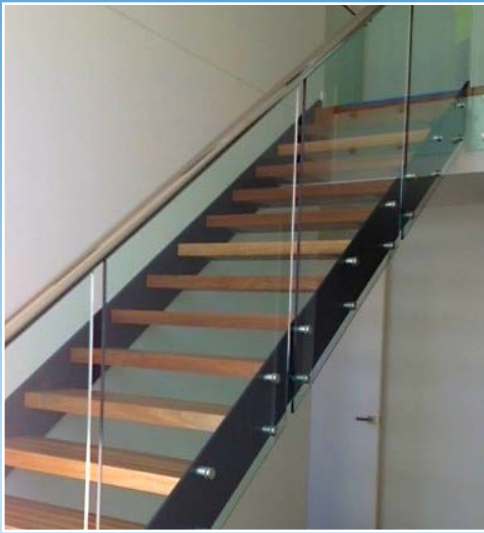
FRAMELESS BALUSTRADE

- Standard and Custom 12mm toughened glass
- 316 marine grade stainless steel mini posts and handrails



MARTHA COVE ALUMINIUM & GLASS

- Standard and Custom aluminium and glass balustrading with many colour and glass combinations
- Standard 6mm toughened glass with polished bottom edge
- Choice of handrails, all corners are seamlessly welded as standard for extra strength and rigidity.
- Max spacing 1500mm



FRAMELESS STAIR BALUSTRADE

- Custom Cantilevered Face fixed 12mm raked clear toughened glass
- 316 Stainless Handrail & stand-off button brackets



MARTHA COVE FULLY FRAMED BALUSTRADE & PRIVACY SCREENS

- Standard & custom aluminium & glass balustrading with many colour & glass combinations
- Standard panels 6mm clear toughened glass as standard - Privacy panels 6mm acid etch as standard
 - Choice of handrails with all corners seamless welded as standard
- Max spacing standard panels 1500mm, max spacing privacy screen 1200mm



STAINLESS POST & GLASS POOL BALUSTRADE

- Standard and Custom 10mm Toughened Glass
- 316 Marine grade Stainless posts core drilled Into concrete substrate



CUSTOM STAINLESS STANDOFF HANDRAILS

- Custom stainless handrail with seamless joins as standard to compliment
- Our Custom cantilevered face fixed 12mm raked toughened glass



STANDARD 12MM FRAMELESS POOL BALUSTRADE

- Standard (and Custom if required) 12mm toughened glass
- 316 Marine Grade Stainless Mini Posts round or square as standard
- High quality, top end, soft close hydraulic self closing pool gate hinges and latches as standard



MARTHA COVE SEMI FRAMELESS POOL BALUSTRADE

- Standard (& custom if required) aluminium posts in choice of colours
 - 10mm toughened glass with top & bottom edges polished
- Posts core drilled into concrete or surface fixed onto appropriate substrate